

Legend

- 1 Screw compressor
- 2 Hose line
- 3 Cyclone separator
- 4 Ball valve
- 5 Air receiver
- 6 Refrigeration dryer w. bypass
- 7 Microfilter combination
- 8 Oil- water separator
- 9 Autom. condensate drain
- 10 Air main charging system
- 11 Air receiver

* Bypass lines should not be fitted on standby units or when 100 % compressed air quality is required

The requirements of items 3,5 and 11 should be chosen according to operating conditions.

Unit model	Compressed air connection	Air entrance aperture m ² free cross section per unit	Incoming air volume m ³ /h per unit	Exhaust ducting L x B (mm)	Centrifugal separator model	Compressed air connection	Eco-Drain	Air receiver capacity (l)	Eco-Drain	** Refrigeration dryer model	Compressed air connection	Air entrance aperture m ² free cross section per dryer	Incoming air volume m ³ /h per dryer	Micro-filter combination model	Compressed air connection	Oil-water separator
SX 3	DN 15	0,1	1100	200 x 355	ZK 01	DN 20	21 P	350	21 P	TA 5	DN 15	0,1	650	FFG 6 D	DN 10	Aquamat 2
SX 4	DN 15	0,1	1500	200 x 355	ZK 01	DN 20	21 P	350	21 P	TA 5	DN 15	0,1	650	FFG 6 D	DN 10	Aquamat 2
SX 6	DN 15	0,1	1500	200 x 355	ZK 01	DN 20	21 P	350	21 P	TA 5	DN 15	0,1	650	FFG 10 D	DN 15	Aquamat 2

Permissible overall pressure loss for exhaust duct SX 3
Δp = 40 Pa

Permissible overall pressure loss for exhaust duct SX 4
Δp = 30 Pa

Permissible overall pressure loss for exhaust duct SX 6
Δp = 20 Pa

Designed for reference terms
DIN/ISO 7183 Option A

Contained in the drawing are components to be installed by the user.
The provisions of EN 12101 (VAV 1002 16 / 13), compressor from 10.01.2005 must be observed. We refer especially to para. 13-17 (UVV accident prevention regulations).
National safety and accident prevention regulations must be observed.

KAESER KOMPRESSOREN

Name: Installation proposal
SX - compressor space
Installation proposal

Scale: 1:1
Date: 15.09.
Name: Grofner

Plan No.: MU3500e
Page 1 of 1

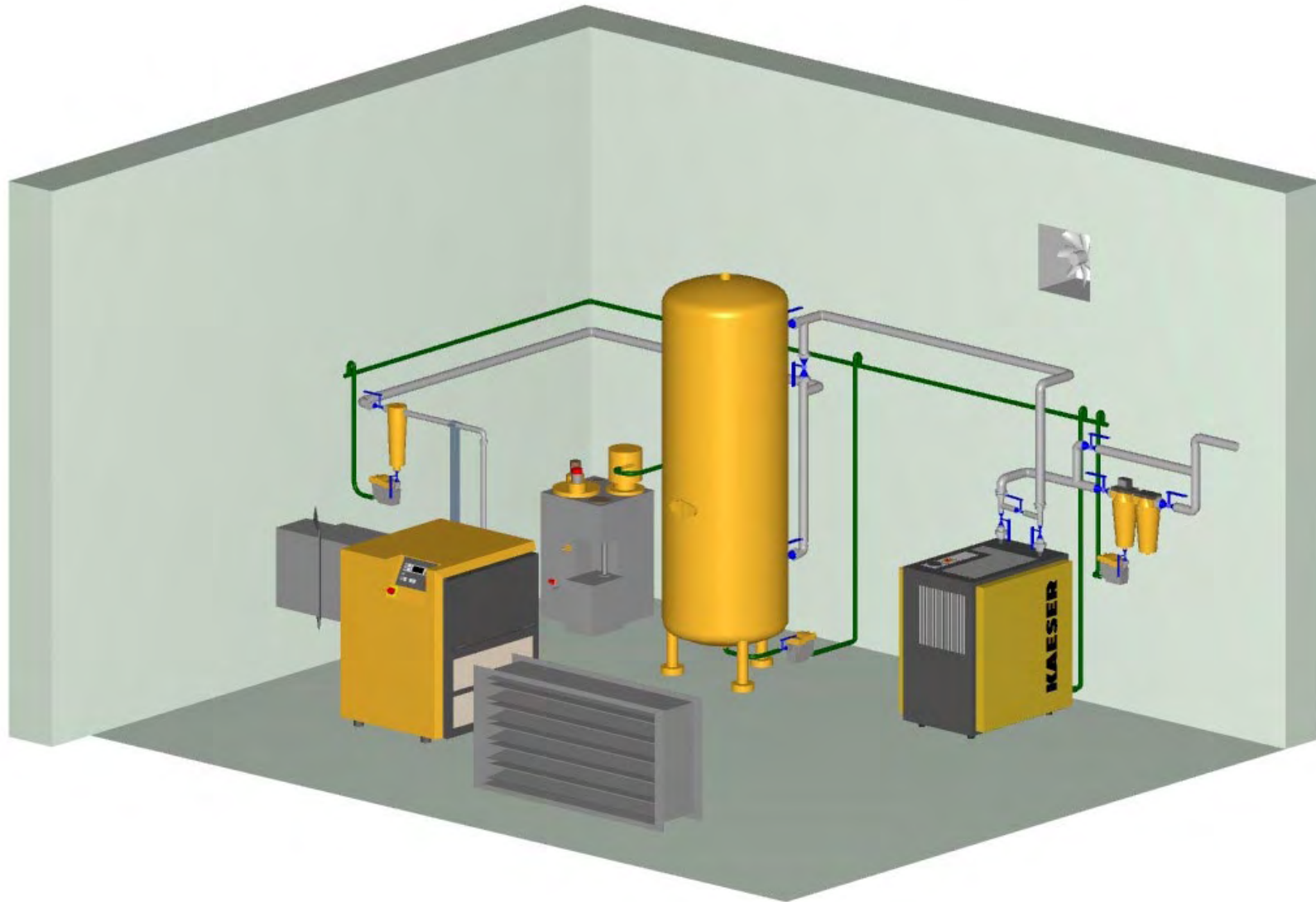
Safety codes on site have to be paid attention to.

Ambient temperature
min.: + 3° C
max.: + 40° C

2.4.

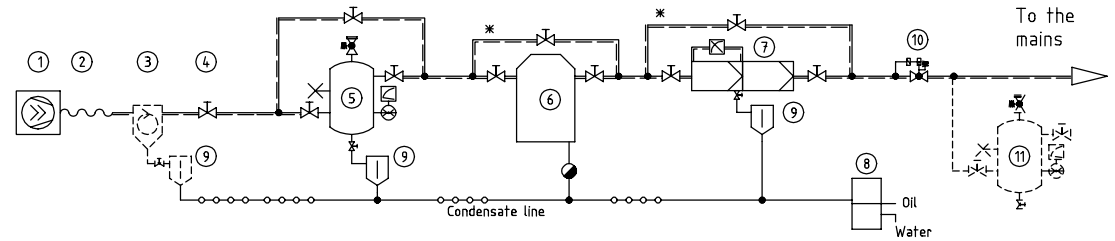
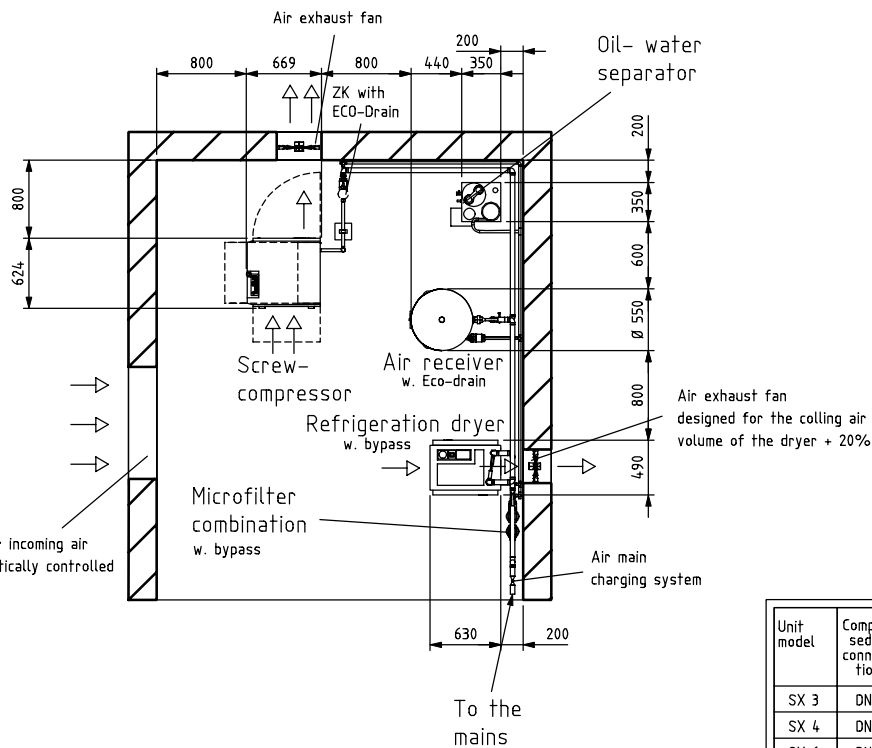
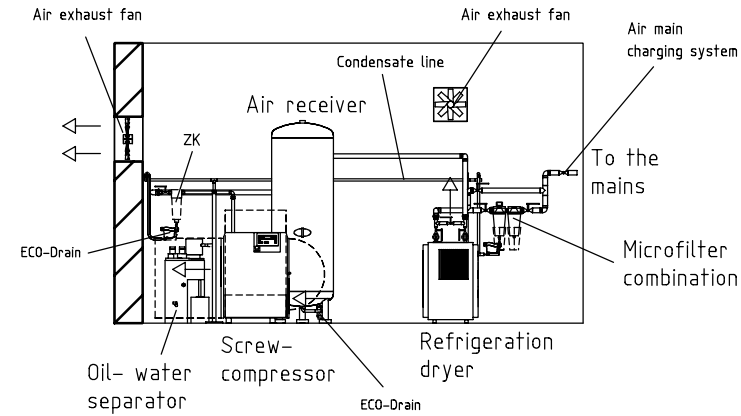
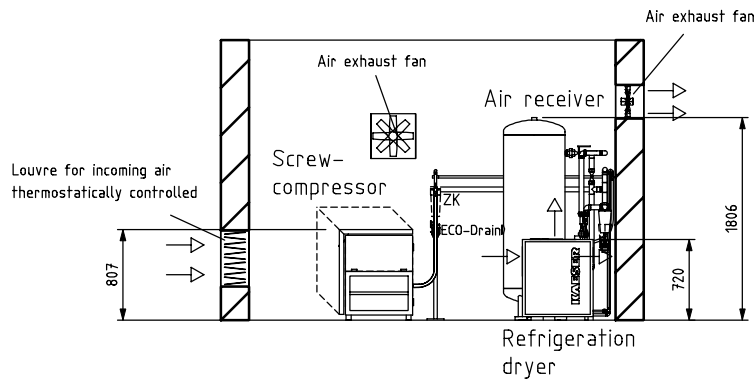
This drawing is not protected by patent. It is a technical drawing and may be used for other purposes.

We reserve the right to make changes in the course of development. This drawing can only be modified with CAD.



KAESER
KOMPRESSOREN

MU03500



Legend

- 1 Screw compressor
- 2 Hose line
- 3 Cyclone separator
- 4 Ball valve
- 5 Air receiver
- 6 Refrigeration dryer w. bypass
- 7 Microfilter combination
- 8 Oil- water separator
- 9 Autom. condensate drain
- 10 Air main charging system
- 11 Air receiver

* Bypass lines should not be fitted on standby units or when 100 % compressed air quality is required

The requirements of items 3,5 and 11 should be chosen according to operating conditions.

Unit model	Compressed air connection	Air entrance aperture m ² free cross section per unit	Incoming air volume m ³ /h per unit	Exhaust ventilator thrust 100 Pa designed for m ³ /h per unit	Centrifugal separator model	Compressed air connection	Eco-Drain	Air receiver capacity (l)	Eco-Drain	**Refrigeration dryer model	Compressed air connection	Air entrance aperture m ² free cross section per dryer	Incoming air volume m ³ /h per dryer	Micro-filter combination model	Compressed air connection	Oil-water separator
SX 3	DN 15	0,1	1100	1000	ZK 01	DN 20	21 P	350	21 P	TA 5	DN 15	0,1	650	FFG 6 D	DN 10	Aquamat 2
SX 4	DN 15	0,1	1500	1300	ZK 01	DN 20	21 P	350	21 P	TA 5	DN 15	0,1	650	FFG 6 D	DN 10	Aquamat 2
SX 6	DN 15	0,1	1500	1500	ZK 01	DN 20	21 P	350	21 P	TA 5	DN 15	0,1	650	FFG 10 D	DN 15	Aquamat 2

** Designed for reference terms
DIN/ISO 7183 Option A

Contained in the drawing are components to be installed by the user.
The provisions of DIN 9102 (UVV 1992) § 4 (1) & (2) (occupancy from 01.03.1997) must be observed. We refer especially to para. 13-19 (UVV accident prevention regulations).
National safety and accident prevention regulations must be observed.

KAESER KOMPRESSOREN	Scale	2000	Date		Name	
	Inst. No.		Drawn	15.09.	Großter	
Name	Installation proposal		Plan No.	MU03300e		
SX compressor space recommended installation		Page		1 of 1		

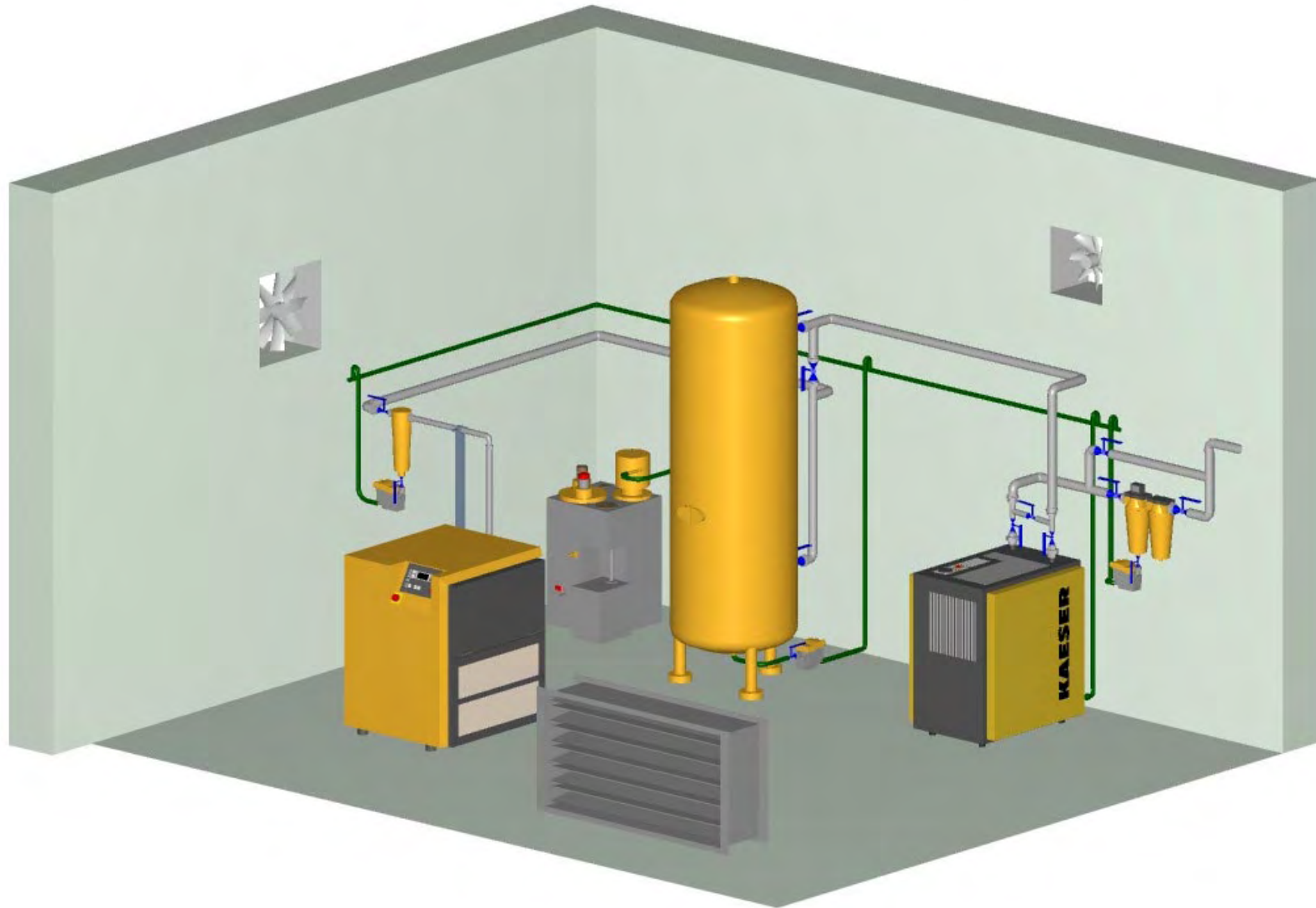
Safety codes on site have to be paid attention to.

Ambient temperature
min.: + 3° C
max.: + 40° C

2.3.

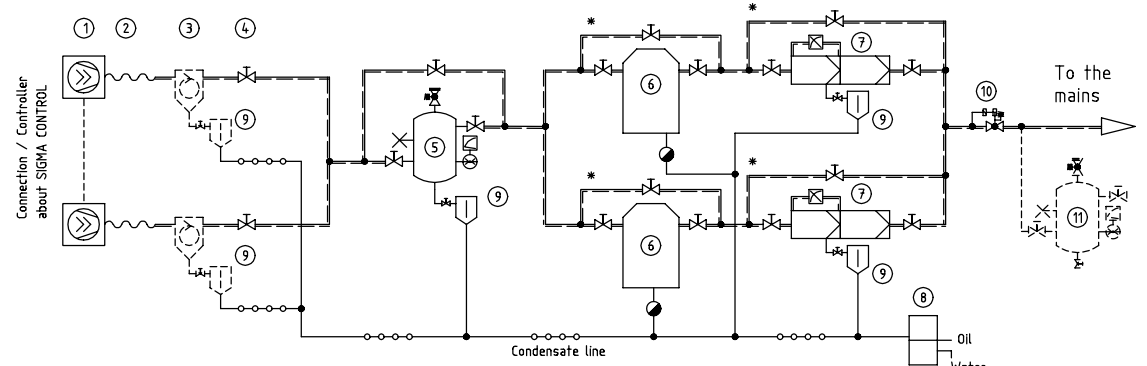
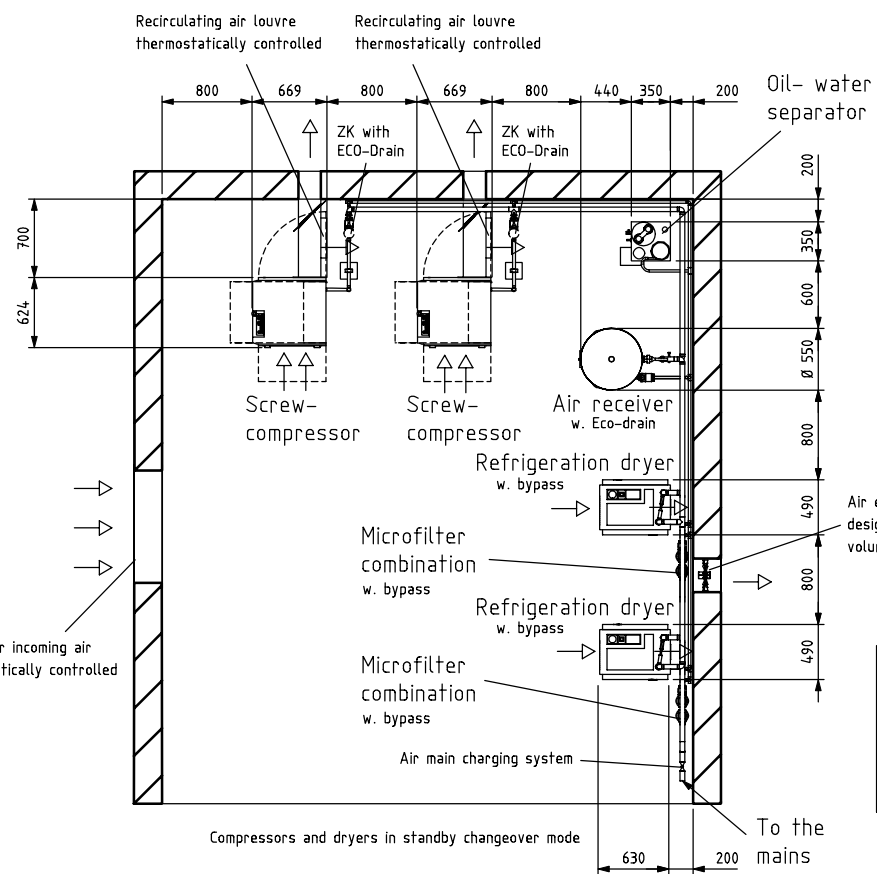
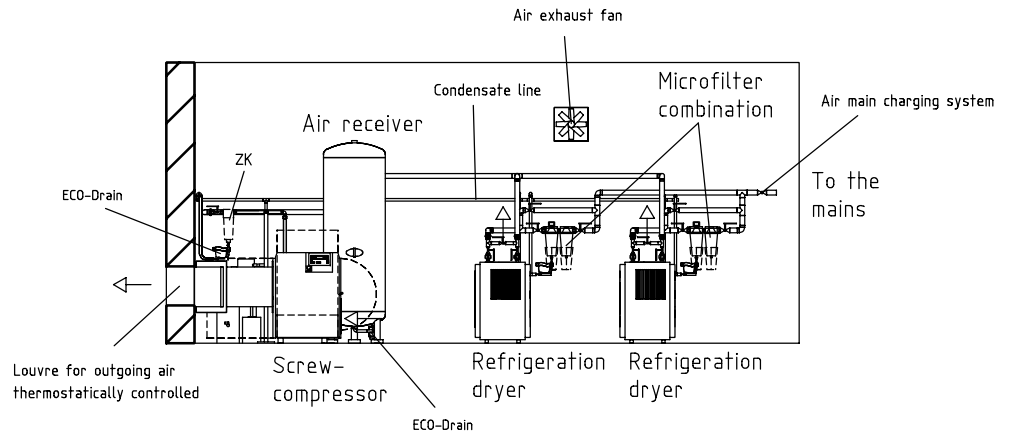
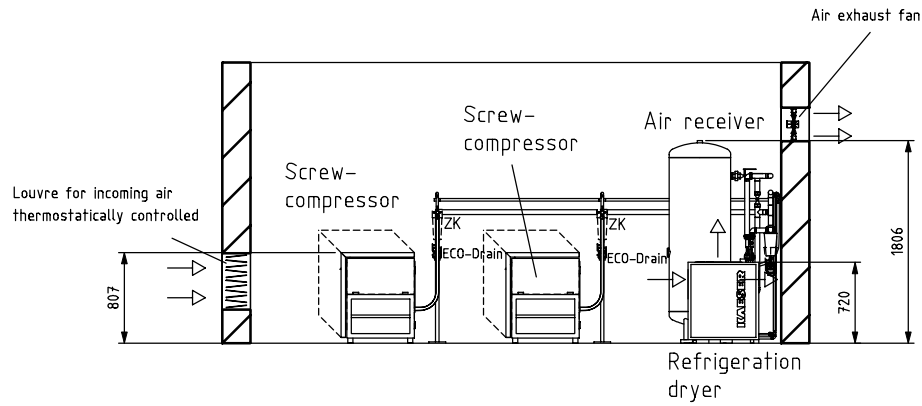
This drawing is our property and may not be copied or reproduced without our written permission.

We reserve the right to make changes in the course of development. This drawing can only be modified with CAD.



KAESER
KOMPRESSOREN

MU03300



- Legend**
- 1 Screw compressor
 - 2 Hose line
 - 3 Cyclone separator
 - 4 Ball valve
 - 5 Air receiver
 - 6 Refrigeration dryer w. bypass
 - 7 Microfilter combination
 - 8 Oil- water separator
 - 9 Autom. condensate drain
 - 10 Air main charging system
 - 11 Air receiver
- * Bypass lines should not be fitted on standby units or when 100 % compressed air quality is required
- The requirements of items 3,5 and 11 should be chosen according to operating conditions.

Unit model	Compressed air connection	Air entrance aperture m ² free cross section	Incoming air volume m ³ /h per unit	Exhaust ducting L x B (mm)	Centrifugal separator model	Compressed air connection	Eco-Drain	Air receiver capacity (l)	Eco-Drain	** Refrigeration dryer model	Compressed air connection	Air entrance aperture m ² free cross section per dryer	Incoming air volume m ³ /h per dryer	Micro-filter combination model	Compressed air connection	Oil-water separator
SX 3	DN 15	0,1	1100	200 x 355	ZK 01	DN 20	21 P	350	21 P	TA 5	DN 15	0,1	650	FFG 6 D	DN 10	Aquamat 2
SX 4	DN 15	0,1	1500	200 x 355	ZK 01	DN 20	21 P	350	21 P	TA 5	DN 15	0,1	650	FFG 6 D	DN 10	Aquamat 2
SX 6	DN 15	0,1	1500	200 x 355	ZK 01	DN 20	21 P	350	21 P	TA 5	DN 15	0,1	650	FFG 10 D	DN 15	Aquamat 2

Permissible overall pressure loss for exhaust duct SX 3
 $\Delta p = 40 \text{ Pa}$

Permissible overall pressure loss for exhaust duct SX 4
 $\Delta p = 30 \text{ Pa}$

Permissible overall pressure loss for exhaust duct SX 6
 $\Delta p = 20 \text{ Pa}$

Designed for reference terms
 DIN/ISO 7183 Option A

Contained in the drawing are components to be installed by the user.
 The provisions of EN 10132:2011 1002:16 / 13.4. compressor from 10.01.2011 must be observed. We refer especially to para. 13-17 DUV (accident prevention regulations).
 National safety and accident prevention regulations must be observed.

KAESER
 KOMPRESSOREN

Name: Installation proposal
 SX - compressor space
 Installation proposal

Scale: 2000
 Date: 15.09.
 Name: Grofner

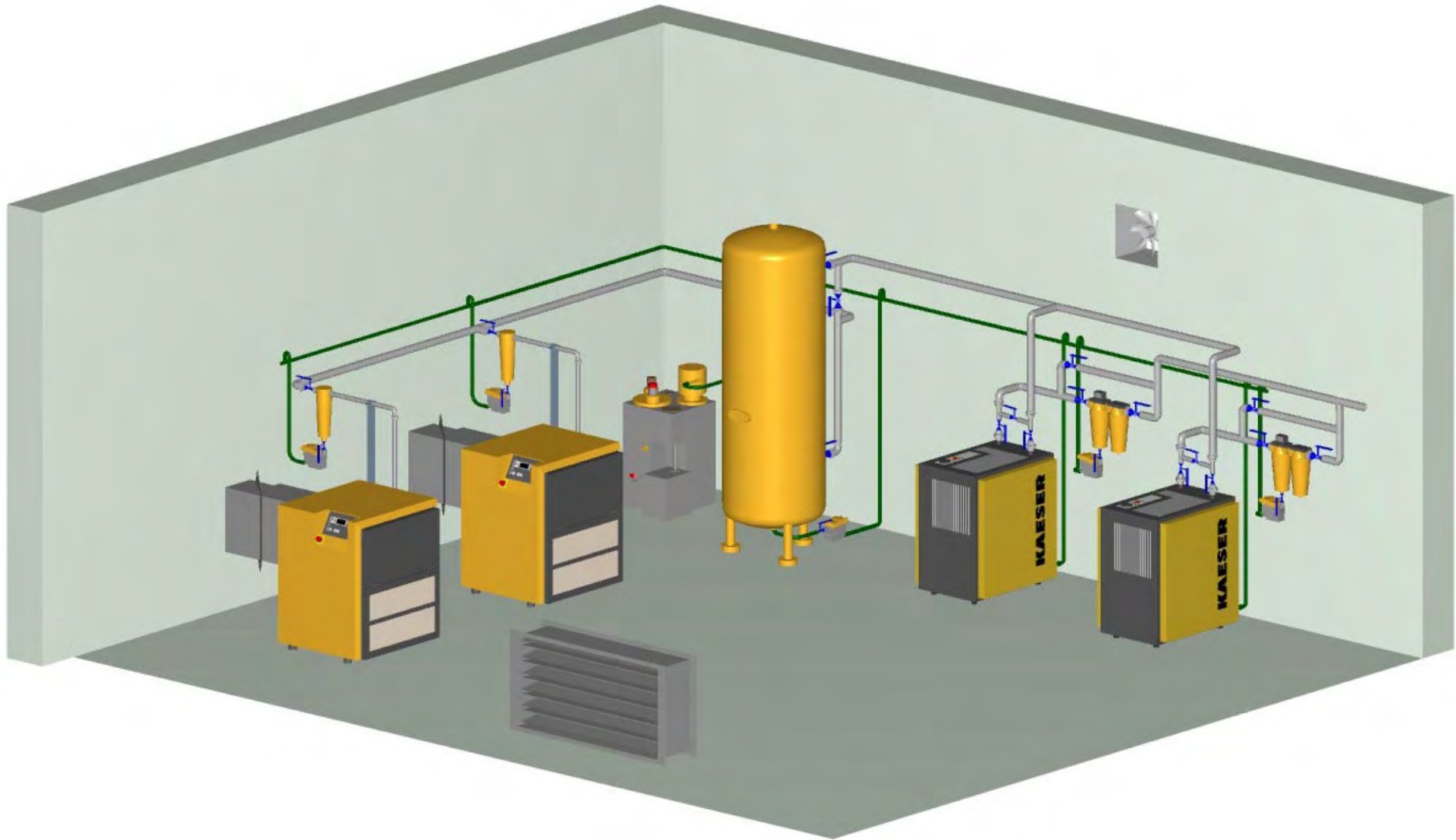
Plan No.: MU03400e
 Page 1 of 1

2.2.

Safety codes on site have to be paid attention to.

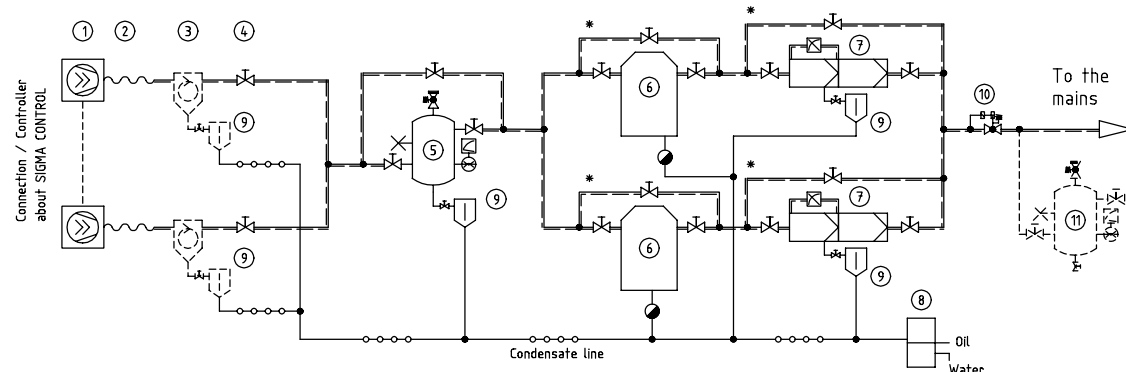
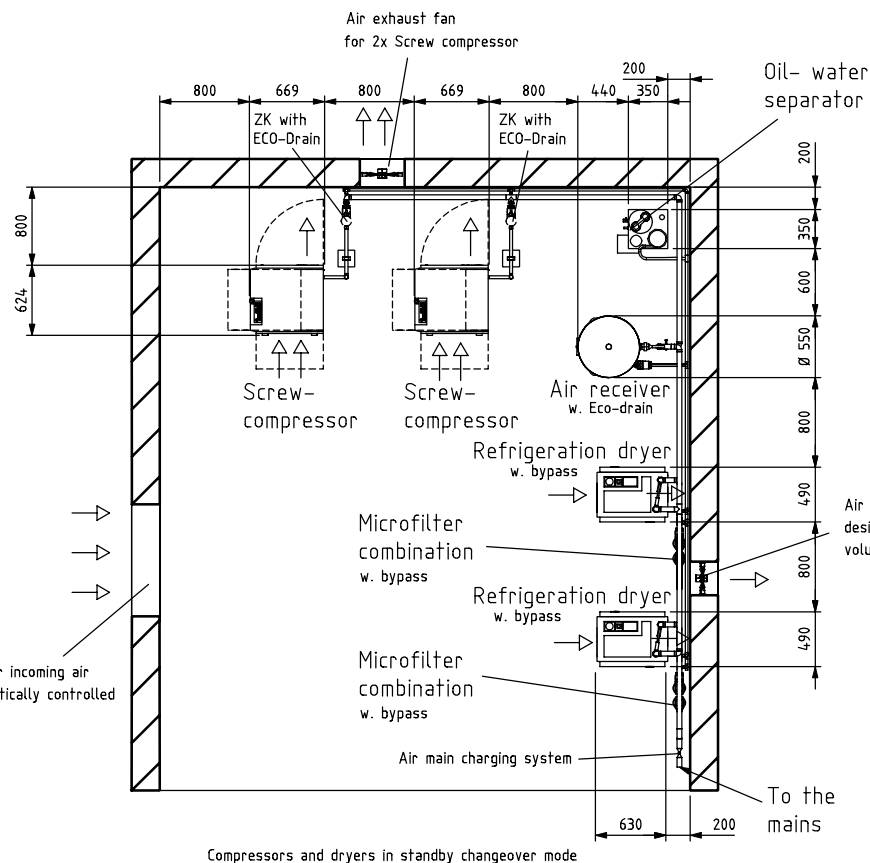
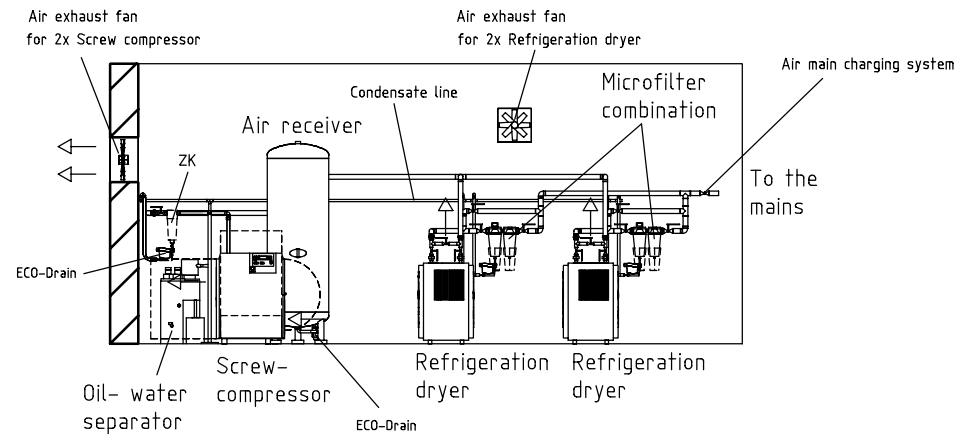
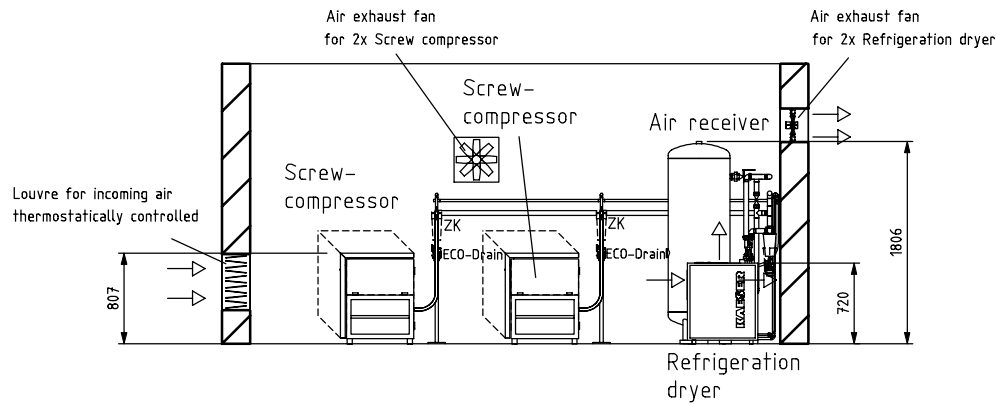
Ambient temperature
 min.: + 3° C
 max.: + 40° C

We reserve the right to make changes in the course of development. This drawing can only be modified with CAD.



KAESER
KOMPRESSOREN

MU03400



Legend

- 1 Screw compressor
- 2 Hose line
- 3 Cyclone separator
- 4 Ball valve
- 5 Air receiver
- 6 Refrigeration dryer w. bypass
- 7 Microfilter combination
- 8 Oil-water separator
- 9 Autom. condensate drain
- 10 Air main charging system
- 11 Air receiver

* Bypass lines should not be fitted on standby units or when 100 % compressed air quality is required

The requirements of items 3,5 and 11 should be chosen according to operating conditions.

Unit model	Compressed air connection	Air entrance aperture m ² free cross section	Incoming air volume m ³ /h per unit	Exhaust ventilator thrust 100 Pa designed for m ³ /h per unit	Centrifugal separator model	Compressed air connection	Eco-Drain	Air receiver capacity (l)	Eco-Drain	** Refrigeration dryer model	Compressed air connection	Air entrance aperture m ² free cross section	Incoming air volume m ³ /h per dryer	Micro-filter combination model	Compressed air connection	Oil-water separator
SX 3	DN 15	0,1	1100	1000	ZK 01	DN 20	21 P	350	21 P	TA 5	DN 15	0,1	650	FFG 6 D	DN 10	Aquamat 2
SX 4	DN 15	0,1	1500	1300	ZK 01	DN 20	21 P	350	21 P	TA 5	DN 15	0,1	650	FFG 6 D	DN 10	Aquamat 2
SX 6	DN 15	0,1	1500	1500	ZK 01	DN 20	21 P	350	21 P	TA 5	DN 15	0,1	650	FFG 10 D	DN 15	Aquamat 2

Designed for reference terms
DIN/ISO 7183 Option A

Contained in the drawing are components to be installed by the user.
The pressure of 0,25 MPa (2,5 bar) is a consequence from EN 12077.
must be observed. We refer especially to para. 13-19 UVV (accident prevention regulations).
National safety and accident prevention regulations must be observed.

KAESER
KOMPRESSOREN

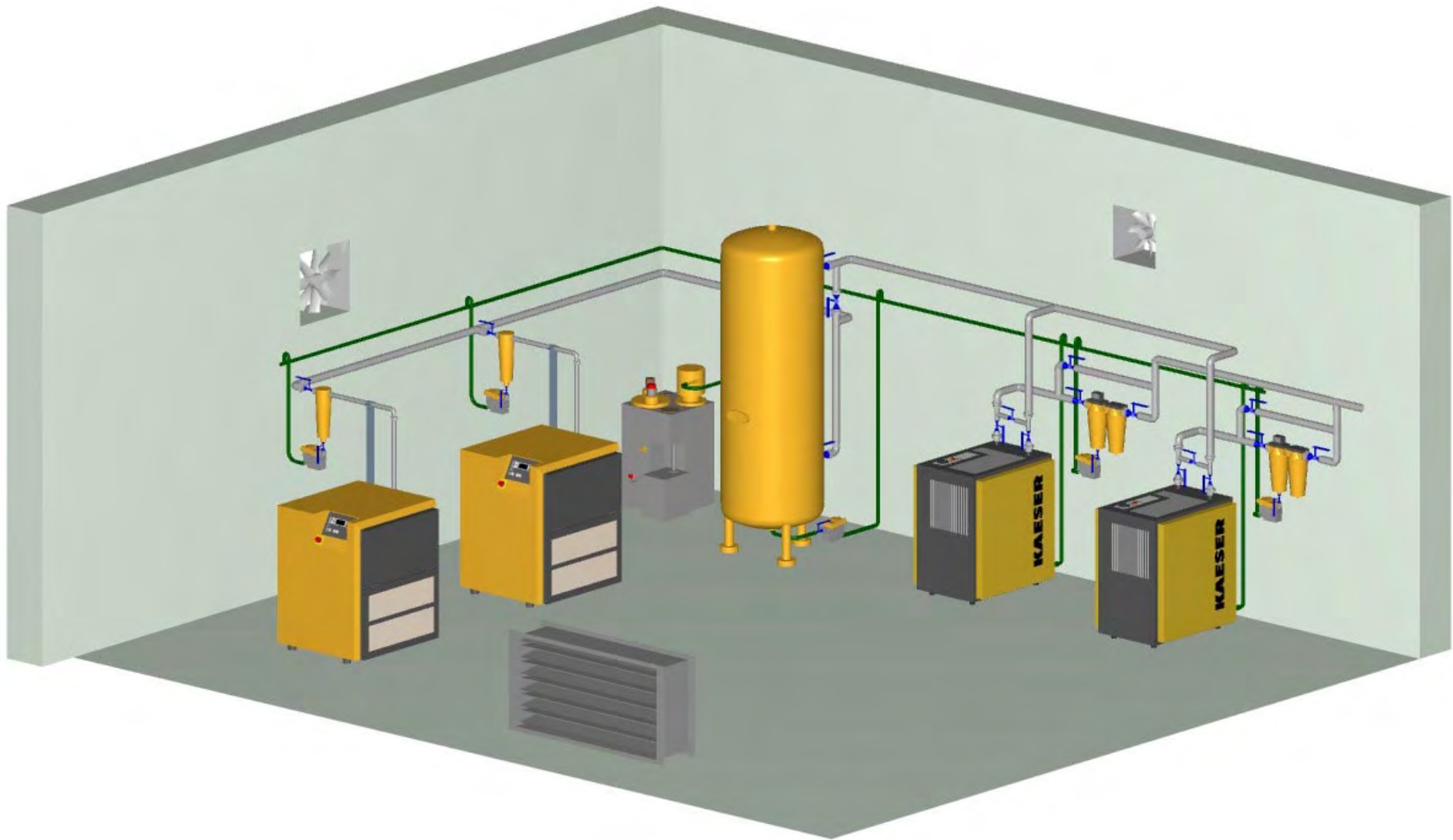
Name: Installation proposal
SX compressor space
recommended installation

Scale: 2000
Date: 15.09.
Name: Großer

Plan No.: MU01102e
Page 1 of 1

Safety codes on site have to be paid attention to.

Ambient temperature
min.: + 3° C
max.: + 40° C



KAESER
KOMPRESSOREN

MU01102